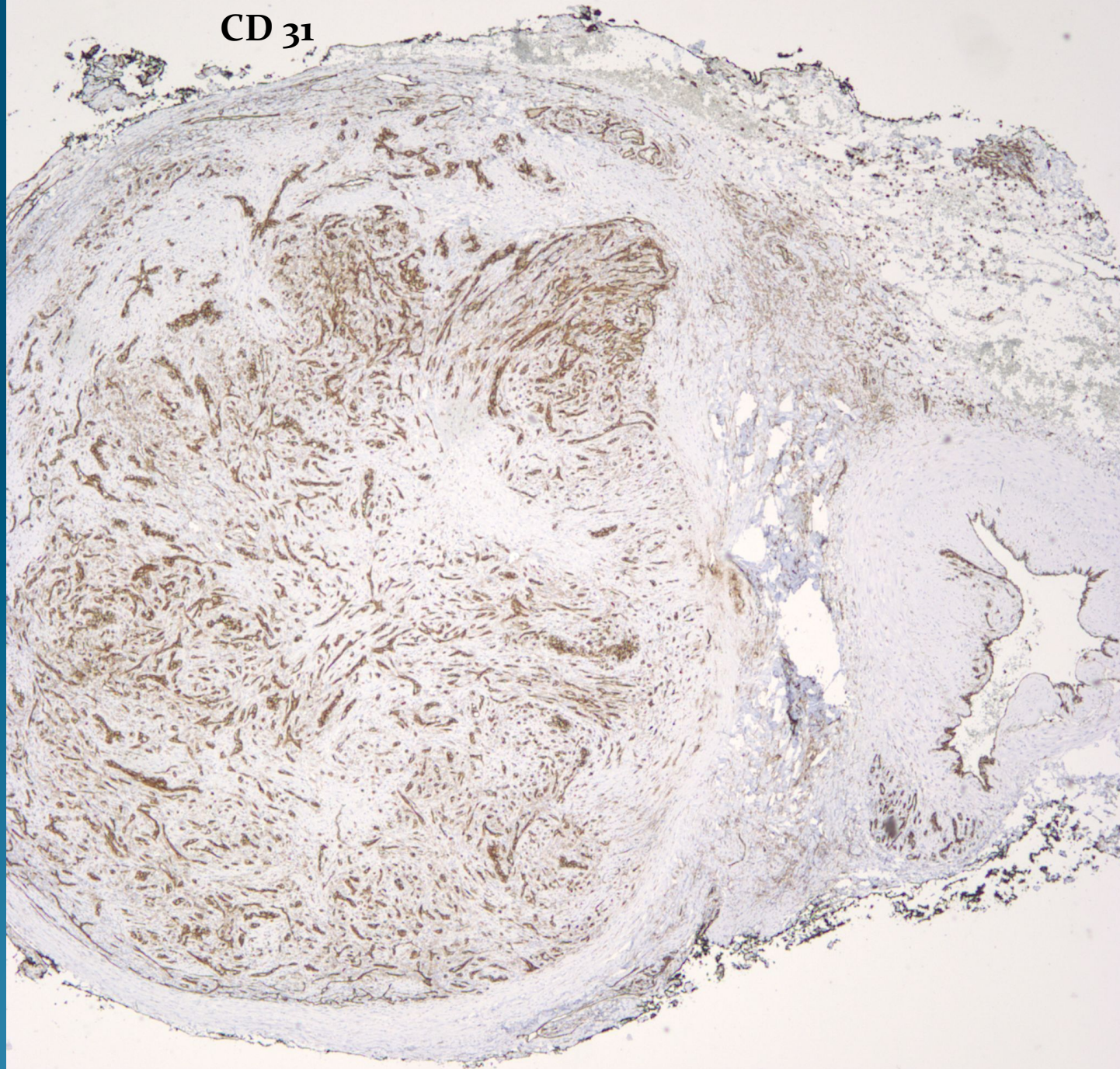


What is the best diagnosis?

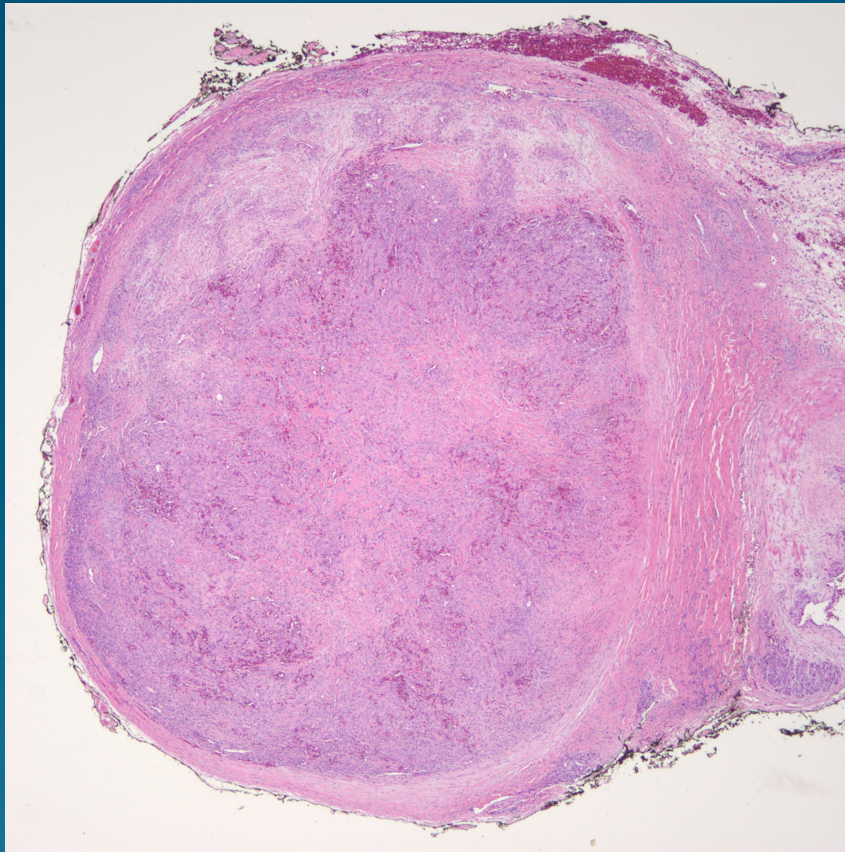
- A. Dermatofibroma with sclerosing hemangioma features
- B. Pyogenic granuloma
- C. Angiolymphoid hyperplasia with eosinophilia
- D. Nodular basal cell carcinoma
- E. Angiosarcoma

Pyogenic Granuloma, Intravascular Variant

CD 31



Pearls



- Circumscribed proliferation of capillary sized vessels arranged in a lobular configuration
- Look for thick vessel wall surrounding entire proliferation.
- May need elastic stain or CD31 to confirm